

END-OF-THE-YEAR

Trophy Awards

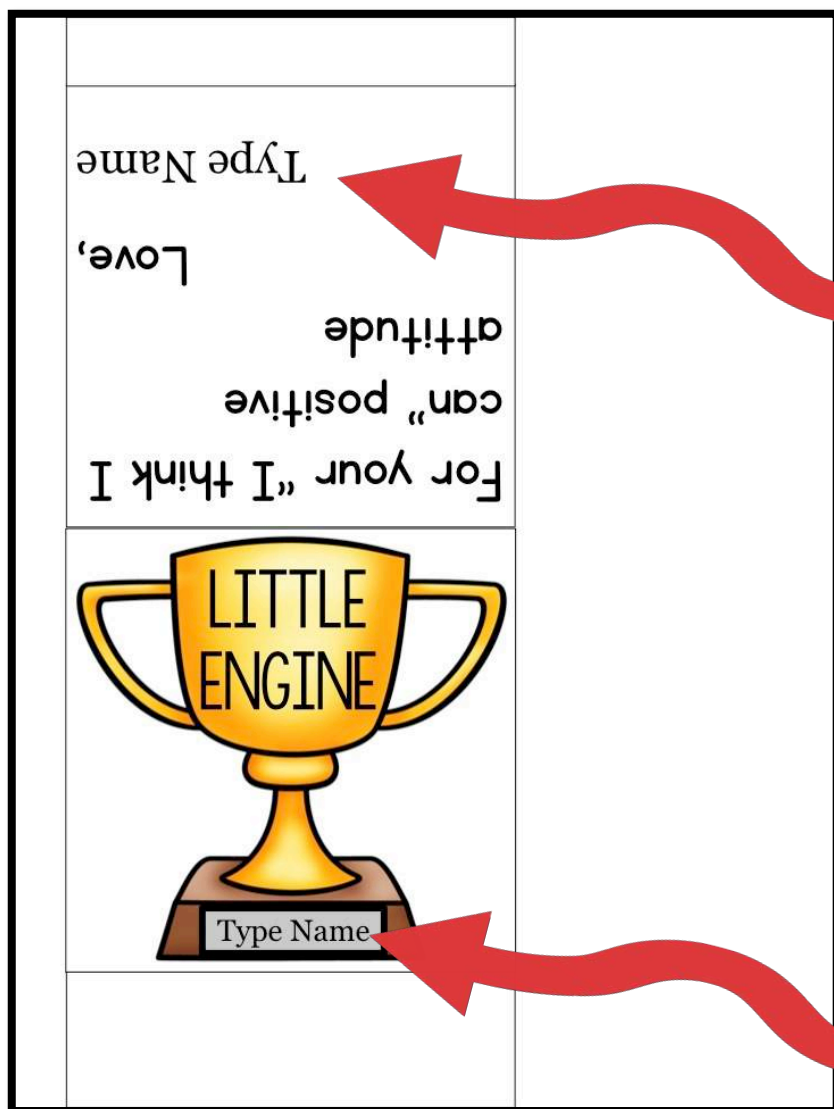
- Super Speller
- Future President
- Sparkling Smile
- Jovial Joker
- Math Fact Master
- Mr. Manners
- Miss Manners
- Handy Helper
- IO Star Team Player
- Creative Kid
- Awesome Organizer
- Right Hand Man
- Right Hand Gal
- Amazing Author
- Oh My Word!
- Recess Rockstar
- Homework Hero
- A+ Attendance
- Mr. Nice Guy
- Super Challenger
- Go Team!
- Chapter Book Champ
- Tech Whiz
- Miss Nice Gal
- True Blue Buddy
- Hand of Gold
- Curious George
- Math Master
- Awesome Artist
- Pablo Picasso
- Music Maestro
- P.E. Powerhouse
- Ears of Gold
- Lunchroom Leader
- Future Famous Author
- Future Famous Artist
- Golden Crayon
- Forever Friend
- Golden Glove
- Sight Word Wizard
- Honest Abe
- Dojo Gold
- Dojo Silver
- Dojo Bronze
- Morning Master
- Problem Solver
- Always On Task
- Busy Bee
- Little Engine Award
- Dory Award
- Buzz Lightyear Award
- Create your own!

END-OF-THE-YEAR

Trophy Assembly

1A. PERSONALIZE THEM {TYPE NAMES}

Click where it says "Type Name" and enter your text.



Type
YOUR
name
here

Type
STUDENT'S
name
here

END-OF-THE-YEAR

Trophy Assembly

1B. PERSONALIZE THEM {WRITE NAMES}

Or, you can print first and choose to write in your name and theirs!



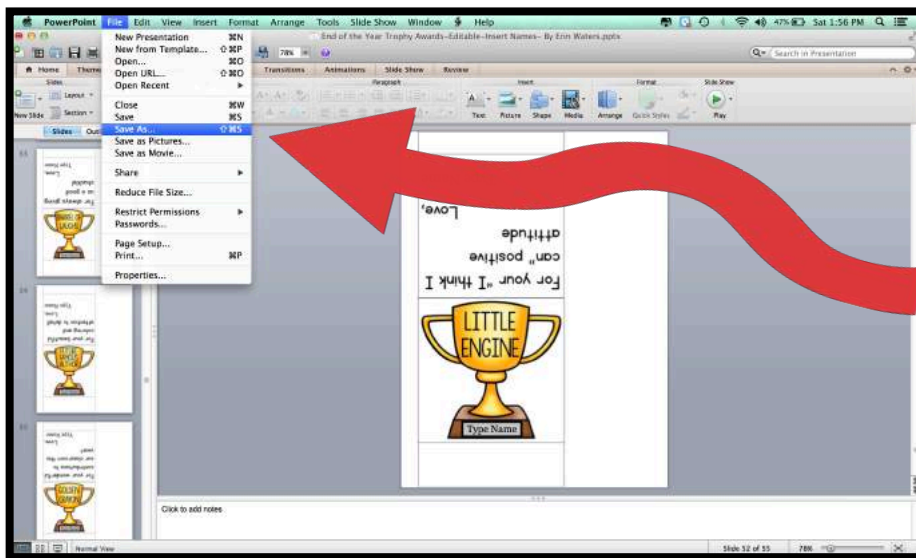
Write
YOUR
name
here

Write
STUDENT'S
name
here

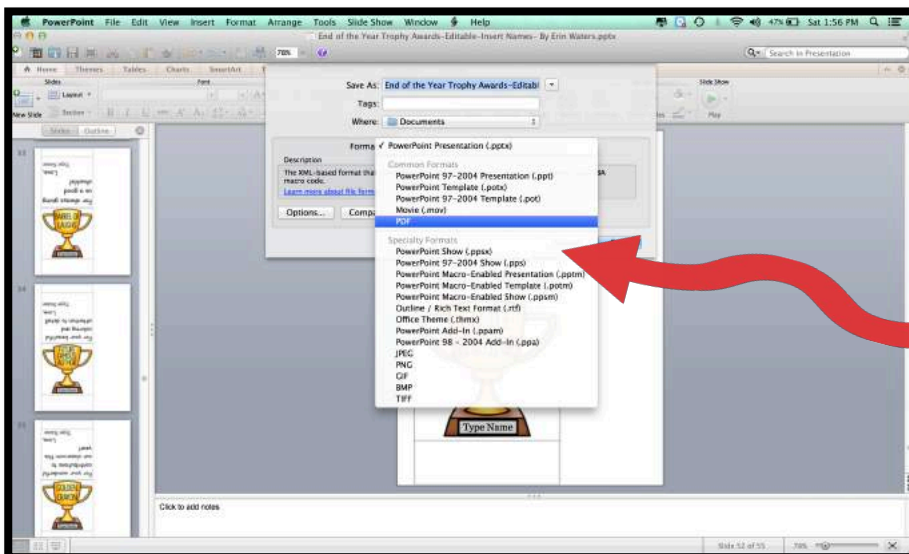
END-OF-THE-YEAR *Trophy Assembly*

2A. PRINT THEM! {FOR TYPED NAMES}

First, save your file as a PDF to ensure easier and higher quality printing.



Click on
File,
Save As



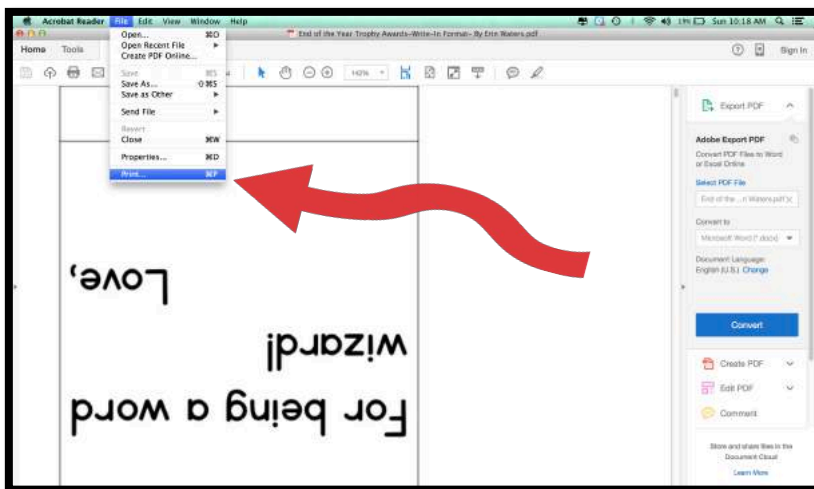
Select
PDF;
Click
Save.

END-OF-THE-YEAR *Trophy Assembly*

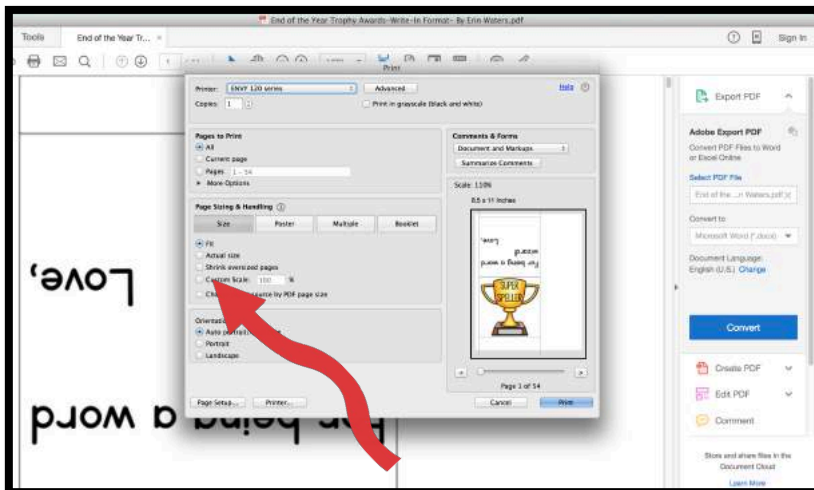
2. PRINT THEM! {FOR ALL VERSIONS}

Open your Trophy PDF. I like to use Adobe Reader.

*Note: Cardstock works best for durability of trophies.



Click on
File,
Print



Select
"Fit to
page"
option;
click
Print!

END-OF-THE-YEAR

Trophy Assembly

3. CUT THEM! {FOR ALL VERSIONS}

Cut around the outside border of the trophy.



The red line shows where to cut

END-OF-THE-YEAR *Trophy Assembly*

4. FOLD THEM! {FOR ALL VERSIONS}

Fold on the lines indicated.



The red lines show where to fold

END-OF-THE-YEAR

Trophy Assembly

5. GLUE THEM! {FOR ALL VERSIONS}

Fold on the lines indicated.



The rectangles show where to glue; connect the tabs to create a stand-up trophy!