



Words can't *espresso*  
how much I love you!

# JANUARY

S M T W R F S



You've got a *pizza* my  
heart.

# FEBRUARY

S M T W R F S



You *shamrock* my  
world!

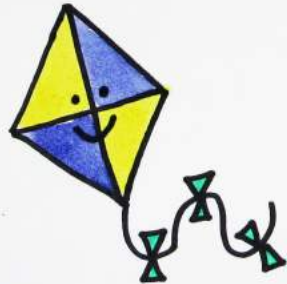
# MARCH

S	M	T	W	R	F	S
				1	2	3
4	5	6	7	8	9	10
11	12	13	14	15	16	17
18	19	20	21	22	23	24
25	26	27	28	29	30	31



Each day, I love you a  
little *mower*.

APRIL



You really *blow* me  
away!

MAY

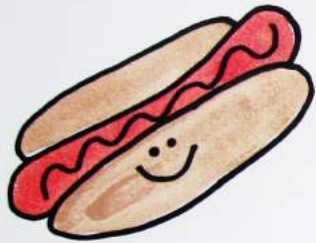
S M T W R F S



You're *sno* much fun!

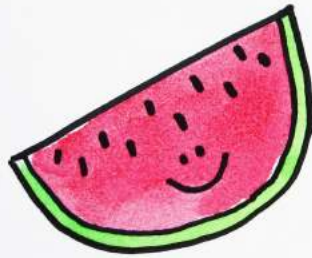
JUNE

S	M	T	W	R	F	S
					1	2
3	4	5	6	7	8	9
10	11	12	13	14	15	16
17	18	19	20	21	22	23
24	25	26	27	28	29	30



Frankly, you are the best.

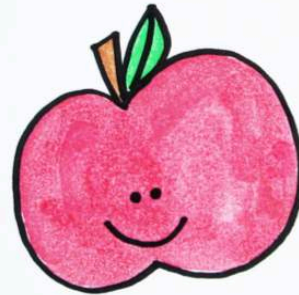
**JULY**



You are one in a melon!

**AUGUST**

S M T W R F S



You are the *apple* of my eye!

**SEPTEMBER**

S M T W R F S

							1
2	3	4	5	6	7	8	
9	10	11	12	13	14	15	
16	17	18	19	20	21	22	
23	24	25	26	27	28	29	
30							



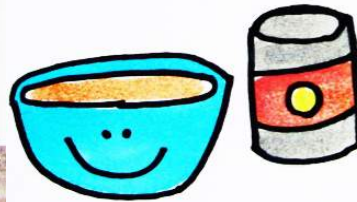
Not to be *corny*, but  
you are so sweet!

## OCTOBER



I'm super *grapeful* for  
you!

## NOVEMBER



You're really *soup-er*.

## DECEMBER

S	M	T	W	R	F	S
						1
2	3	4	5	6	7	8
9	10	11	12	13	14	15
16	17	18	19	20	21	22
23	24	25	26	27	28	29
30	31					